

## Overview

Insulation piercing system : Shear-head bolt ensures precise tightening control of the insulation piercing connectors for ABC. Installation is clean and easy because very low qty of grease is required for the watertightness of these insulated piercing connectors. Here-above IPC connectors are tested “withstand 6kV in water” according NFC 33-020 standard.

The Insulated Piercing Connector (IPC) is widely used for Low Voltage Aerial Bundled Conductor (LV ABC) lines up to 1KV as well as connection in service line system, household distribution system, commercial structure distribution system, street light distribution system and underground connection system.

The blades of the insulation piercing connectors are made of tin-plated copper or tin-plated brass or aluminium alloy allowing connections to Al or Cu conductors.

Equipped with single or double shear head bolt. The torque control nut draws the two parts of the connector together and shears off when the teeth have pierced the insulation and made contact with the conductor strands

## Key Features:

Range-taking

Suitable for XLPE, PE or PVC conductors

Waterproof

Captive and flexible end caps

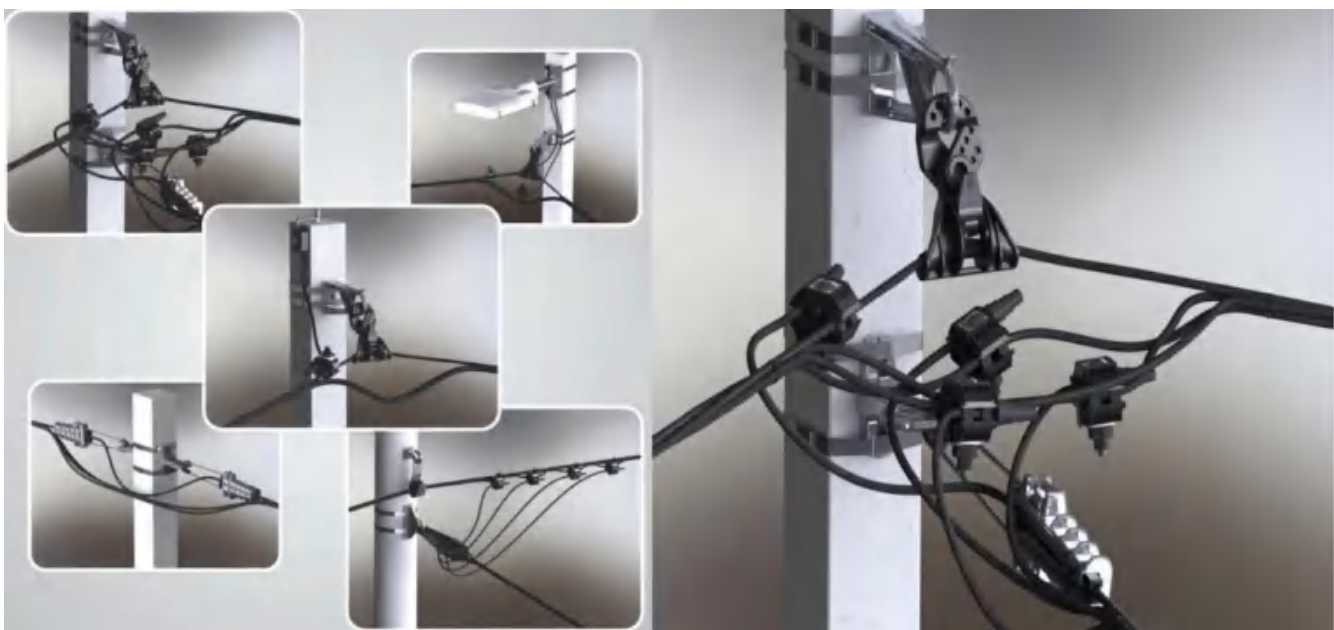
All components are solid and fixed in place

Equipped with shear head to ensure a reliable tightening torque

Operating temperature -55°C to +55°C

Installation temperature -20°C to +55°C

Can be installed on energized main if not under load



## Parameter

Model	Main line section	Branch section	Nominal current	Outline size	Weight	Piercing depth
UN101	1.5-10	1.5-2.5	55	27x41x62	55	1.5-2
UNEP	10-95	1.5-16	55	27x41x62	55	1.5-2
UN102	4-35	4-35	150	45x43x70	130	1.5-2
UN2-95	16-95	4-35(50)	157	46x52x87	160	1.5-2
UN2-150	50-150	4-35(50)	157	46x52x87	162	1.5-2.5
UN3-95	25-95	25-95	214	50x61x100	198	1.5-2
UN4-150	50-150	50-150	316	50x61x100	219	1.5-2.5